

ELECTRICIAN IS REQUIRED TO PULL SEPARATE CABLES TO C.T. CABINET FROM EMC TRANSFORMER AND CUSTOMER'S SWITCH GEAR AND SPLICE THEM IN THE C.T. CABINET USING POLARIS OR COMPARABLE MULTI-TAP CONNECTOR. (MULTI-TAP CONNECTORS MUST BE PROVIDED BY ELECTRICIAN.)

BALDWIN EMC WILL PROVIDE:

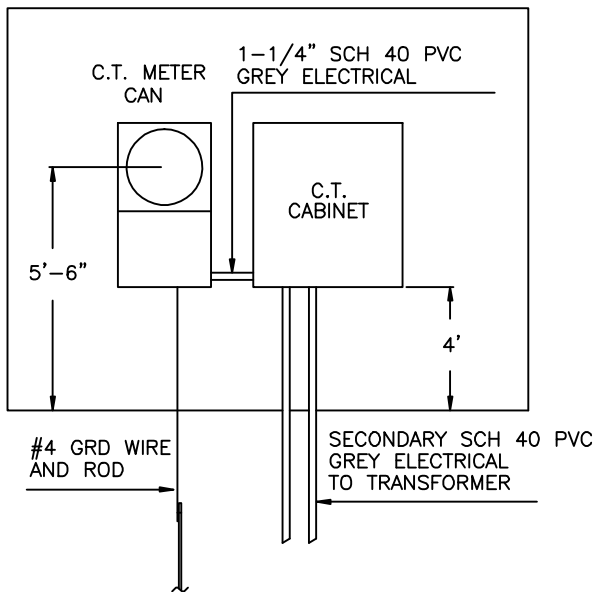
NORTH BALDWIN DISTRICT:

- 1.) A 24x24x12 ALUM. C.T. CABINET FOR \$467.63
- 2.) A 36x36x12 ALUM. C.T. CABINET FOR \$591.25

ALL OTHER DISTRICTS:

- 1.) A 24x24x12 ALUM. C.T. CABINET FOR \$474.15
- 2.) A 36x36x12 ALUM. C.T. CABINET FOR \$599.50

(PRICES ARE SUBJECT TO CHANGE)



IF THE CUSTOMER PURCHASES THEIR OWN CABINET IT MUST BE .08 INCH THICK ALUMINUM UP TO 30"x30" WITH STAINLESS STEEL HARDWARE. IT MUST HAVE TWO HANDLES AND THE ABILITY TO BE PAD LOCKED. IF OVER 30"x30", IT MUST BE .1 INCH THICK.

GET APPROVAL FROM BALDWIN EMC ENGINEER ON ALL CUSTOM BUILT C.T. CABINETS.

TITLE:		C.T. METER CAN AND CABINET	
DWN. BY:	DATE:	SCALE:	SHEET 1 OF 1
D. LITTLE	8/13/09	N.T.S.	
ENG. APPROV:			
B. SEALS	8/13/09		